

### Steeple Data

Base Width: 2'-8"  
Steeple Height: 9'-5"  
Weight: 150 lbs  
One Piece Steeple Unit

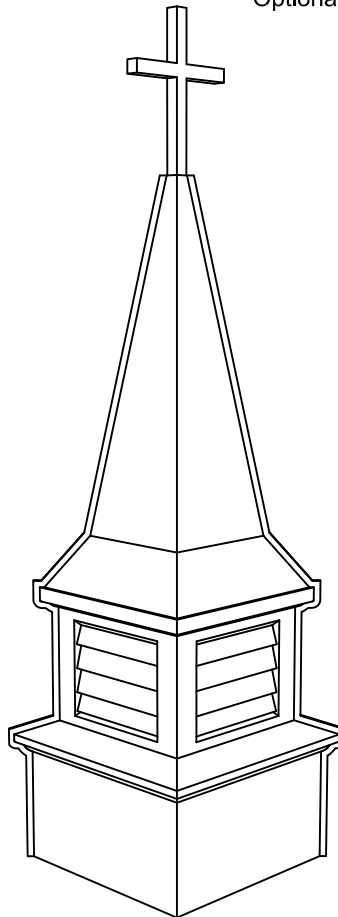
### Available Options

- 2' or 3' Aluminum Cross
- Lightning Protection

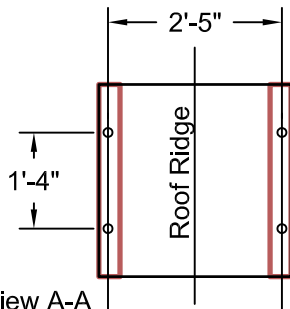
ALL STEEPLES MUST BE MOUNTED ON A COMPLETED WATERPROOF ROOF SYSTEM AS LONG-TERM INSURANCE AGAINST LEAKAGE.

Note: Steeple Tip will be reduced by approx. 14" when Adding Optional Cross

Optional Cross

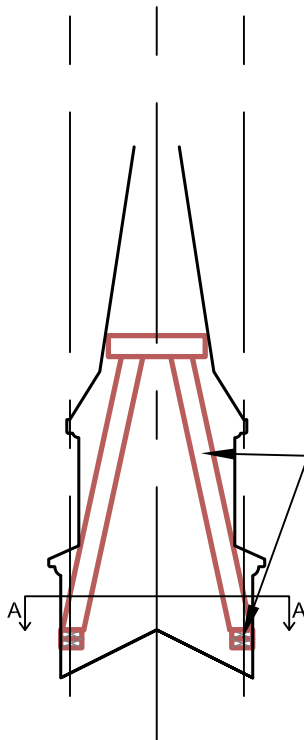


3D-View



Plan View A-A

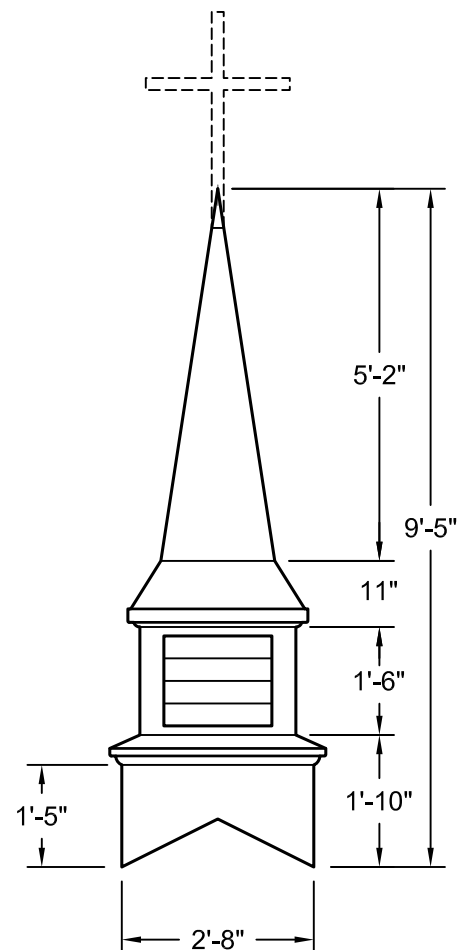
Scale: 3/8" = 1'-0"



Interior Support Detail

Scale: 3/8" = 1'-0"

2x4 INTERIOR  
STRUCTURE WITH  
HEAVY LAMINATED  
BONDED TO FRP  
EXTERIOR



ELEVATION

Scale: 3/8" = 1'-0"

Drawings are property of Fiberglass Unlimited, Inc.

Dimensions may change slightly to accommodate manufacturing.

STEEPLES

MODEL C110

FIBERGLASS UNLIMITED, INC

Phone: 1-800-837-6211

Fax: 334-863-7975

Email: [info@FiberG.com](mailto:info@FiberG.com)

183 Industrial Ave.  
Roanoke, Alabama 36274